

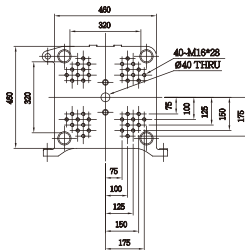
# Energy Saving (Closed Loop)

Technological Innovative Efficient

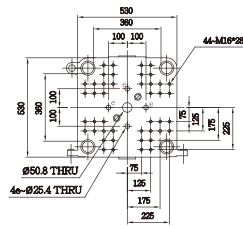
## High Speed Double Toggle Machine



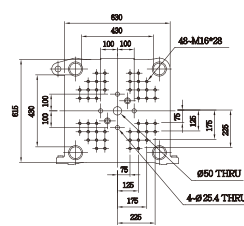
### Mold Platen size



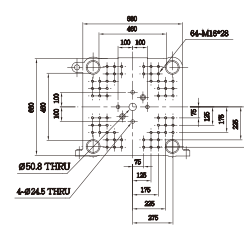
▲ SM50TSV



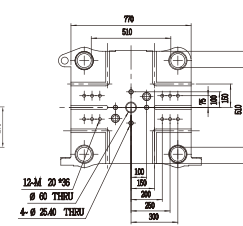
▲ SM90TSV



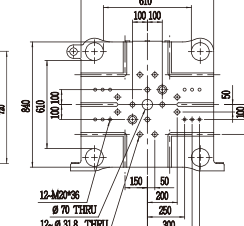
▲ SM120TSV



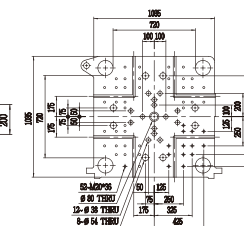
▲ SM150TSV



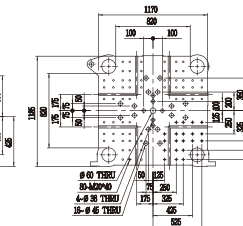
▲ SM200TSV



▲ SM250TSV



▲ SM350TSV



▲ SM450TSV

### Specification

Machine Model	Unit	SM50TSV		SM90TSV		SM120TSV		SM150TSV		SM200TSV		SM250TSV		SM350TSV		SM450TSV		
<b>Injection System</b>																		
Theoretical shot volume	cm <sup>3</sup>	64	80	92	113	128	173	193	251	277	349	382	488	552	735	820	1022	
Shot Weight(PS)	oz	2.1	2.6	3.0	3.7	4.2	5.6	6.3	8.1	9.0	11.3	12.4	15.8	17.9	23.8	26.6	33.1	
	g	59	74	85	104	118	159	178	231	255	321	352	449	508	676	754	941	
Screw Diameter	mm	25	28	28	31	31	36	36	41	41	46	46	52	52	60	60	67	
Injection Pressure	kg/cm <sup>2</sup>	2646	2109	2679	2185	2868	2127	2748	2119	2748	2183	2663	2084	2806	2107	2625	2105	
Injection Rate	cm <sup>3</sup> /sec	83	105	86	106	117	158	127	165	158	199	216	276	255	339	269	335	
Injection Speed	mm/sec	170		140		155		130		120		130		120		95		
Screw Stroke	mm	130		150		170		190		210		230		260		290		
Screw Rotation	rpm	0~300		0~300		0~300		0~300		0~250		0~250		0~250		0~180		
Plasticizing Capacity(PS)	g/sec	6.6	8.3	8.3	11.8	10.2	16.5	16.5	25	20.9	28.1	28.1	34.7	40.7	63.8	45.9	57.3	
<b>Clamping System</b>																		
Clamping Force	ton	50		90		120		150		200		250		350		450		
Opening Stroke	mm	250		270		350		400		470		550		650		740		
Max. Daylight	mm	570		620		750		850		1020		1200		1370		1590		
Mold Height(min-max)	mm	100-320		125-350		150-400		150-450		200-550		200-650		300-720		300-850		
Space Between Tie Bar	mm*mm	320*320		360*360		430*430		460*460		510*510		610*610		720*720		820*820		
Platen Dimension(HxV)	mm*mm	460*460		530*530		630*615		680*660		770*720		890*840		1035*1035		1170*1185		
Hydraulic Ejector	ton*mm	2.2*80		3.4*90		3.4*125		3.4*125		4.9*150		7.7*150		8.7*200		8.7*200		
<b>Power System</b>																		
Pump Motor	kw	11		11		15		15		11+11		15+11		15+15		15+15		
Heating Capacity	kw	6.1	6.9	6.9	7.9	8.5	10.3	10.3	11.8	15.3	17.7	17.7	20.4	22.2	24.8	24.8	24.8	
Max. System Pressure	kg/cm <sup>2</sup>	175		175		175		175		175		175		175		175		
Oil Tank Capacity	Liter	185		195		265		290		430		500		535		615		
<b>Other</b>																		
Machine Dimension	L*W*H(m)	4*1.2*1.5		4.1*1.3*1.6		4.7*1.4*1.7		4.9*1.4*1.75		6.1*1.65*1.8		6.6*1.7*1.95		6.9*1.9*1.95		8*1.9*2.05		
Machine Weight	ton	3.2		3.6		4.6		5.2		8.9		10.8		14		18.8		

NOTE: The above figures are applicable for the voltage/frequency of 220V/60Hz (Specifications may be changed without prior notice.)